

FLOOR PLANS

MARINA PLACE 2

RASHID YACHTS & MARINA

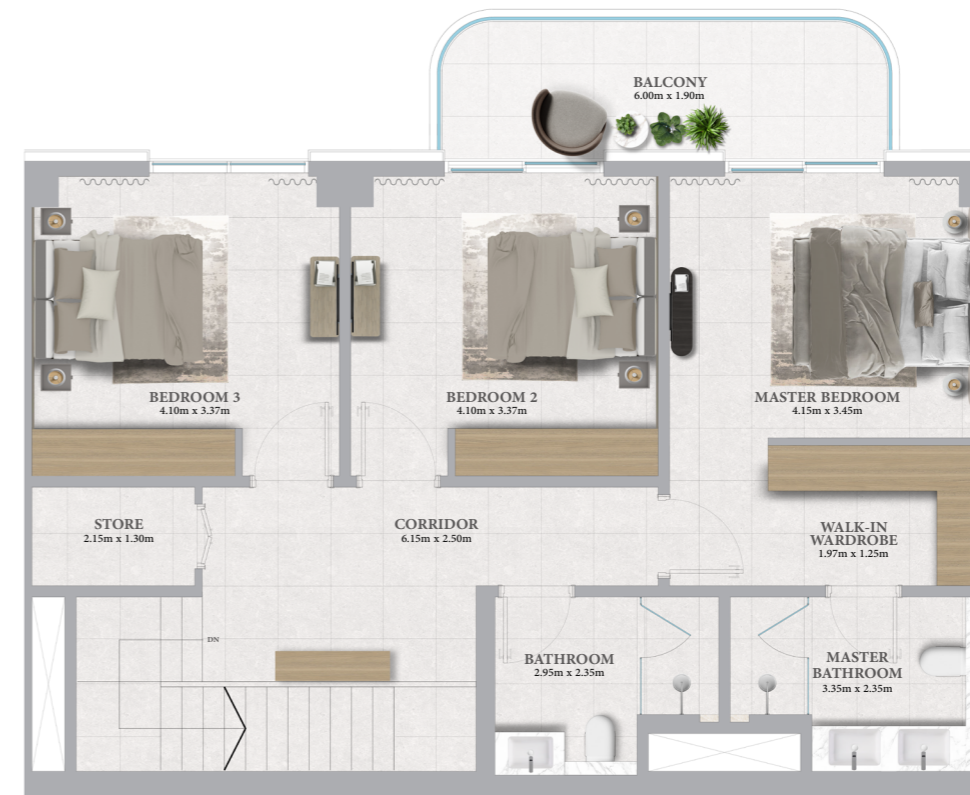
EMAAR

MARINA PLACE 2

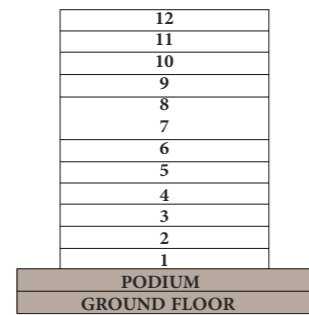
RASHID YACHTS & MARINA

3 BEDROOM TOWNHOUSE

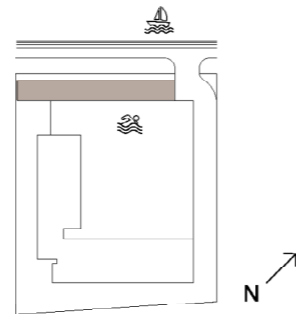
UNITS	01,02		UNITS		03
GROUND LEVEL			GROUND LEVEL		
SUITE AREA	100.05 SQ.M.	1076.93 SQ.FT.	SUITE AREA	100.21 SQ.M.	1078.65 SQ.FT.
TERRACE AREA	24.51 SQ.M.	263.82 SQ.FT.	TERRACE AREA	25.49 SQ.M.	274.37 SQ.FT.
PODIUM LEVEL			PODIUM LEVEL		
SUITE AREA	100.54 SQ.M.	1082.20 SQ.FT.	SUITE AREA	100.70 SQ.M.	1083.93 SQ.FT.
BALCONY AREA	11.16 SQ.M.	120.13 SQ.FT.	BALCONY AREA	11.16 SQ.M.	120.13 SQ.FT.
TOTAL			TOTAL		
SUITE AREA	200.59 SQ.M.	2159.13 SQ.FT.	SUITE AREA	200.91 SQ.M.	2162.58 SQ.FT.
BALCONY AREA	35.67 SQ.M.	383.95 SQ.FT.	BALCONY AREA	36.65 SQ.M.	394.50 SQ.FT.
TOTAL AREA	236.26 SQ.M.	2543.08SQ.FT.	TOTAL AREA	237.56 SQ.M.	2557.08 SQ.FT.



KEY SECTION



KEY LAYOUT



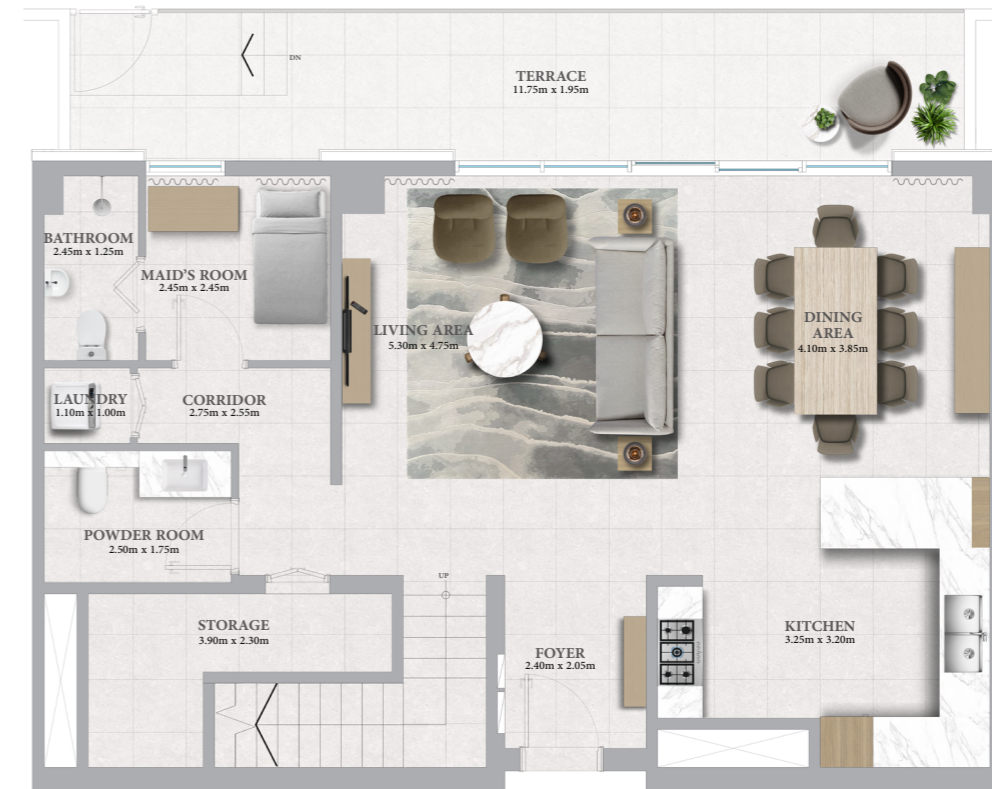
KEY PLAN



GROUND LEVEL



PODIUM LEVEL



FLOOR PLAN 1. All dimensions are in imperial and metric, and measured from finish to finish excluding construction tolerances. 2. All materials, dimensions, and drawings are approximate only. 3. Information is subject to change without notice, at developer's absolute discretion. 4. Actual area may vary from the stated area. 5. Drawings not to scale. 6. All images used are for illustrative purposes only and do not represent the actual size, features, specifications, fittings, and furnishings. 7. The developer reserves the right to make revisions / alterations, at its absolute discretion, without any liability whatsoever.

MARINA PLACE 2

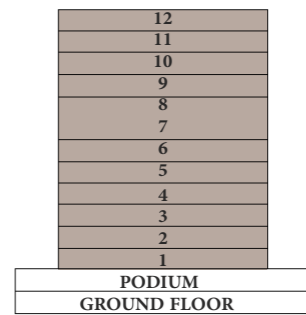
RASHID YACHTS & MARINA

1 BEDROOM - 1A

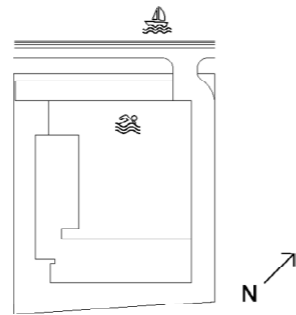
UNITS	107, 108, 207, 208, 216, 307, 308, 316, 407, 408, 416, 507, 508, 516, 607, 608, 616, 707, 708, 716, 807, 808, 816, 907, 908, 916, 1007, 1008, 1016, 1107, 1108, 1207, 1208	
SUITE AREA	66.47 SQ.M.	715.48 SQ.FT.
BALCONY AREA	7.96 SQ.M.	85.68 SQ.FT.
TOTAL AREA	74.43 SQ.M.	801.16 SQ.FT.

UNITS	105, 112, 205, 212, 305, 312, 405, 412, 505, 512, 605, 612, 705, 712, 805, 812, 905, 912, 1005, 1012, 1105, 1205	
SUITE AREA	68.06 SQ.M.	732.59 SQ.FT.
BALCONY AREA	7.96 SQ.M.	85.68 SQ.FT.
TOTAL AREA	76.02 SQ.M.	818.27 SQ.FT.

KEY SECTION



KEY LAYOUT



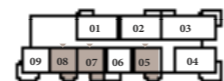
KEY PLAN



LEVEL 1



LEVEL 2-10



LEVEL 11-12



FLOOR PLAN 1. All dimensions are in imperial and metric, and measured from finish to finish excluding construction tolerances. 2. All materials, dimensions, and drawings are approximate only. 3. Information is subject to change without notice, at developer's absolute discretion. 4. Actual area may vary from the stated area. 5. Drawings not to scale. 6. All images used are for illustrative purposes only and do not represent the actual size, features, specifications, fittings, and furnishings. 7. The developer reserves the right to make revisions / alterations, at its absolute discretion, without any liability whatsoever.

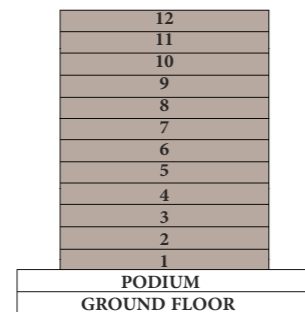
MARINA PLACE 2

RASHID YACHTS & MARINA

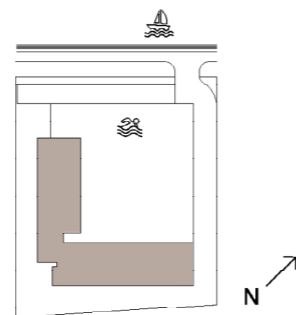
1 BEDROOM - 1B

UNITS	106, 206, 306, 406, 506, 606, 706, 806, 906, 1006, 1106, 1206	
SUITE AREA	66.47 SQ.M.	715.48 SQ.FT.
BALCONY AREA	7.96 SQ.M.	85.68 SQ.FT.
TOTAL AREA	74.43 SQ.M.	801.16 SQ.FT.

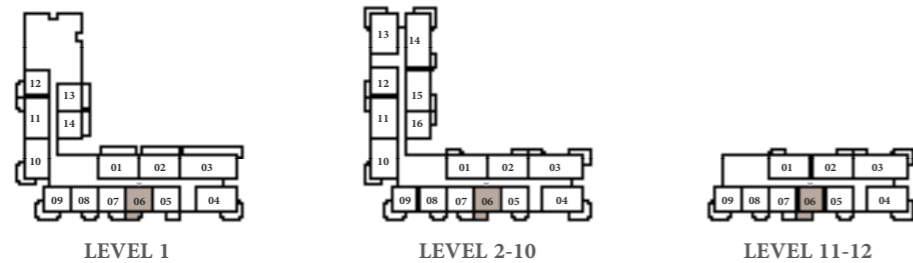
KEY SECTION



KEY LAYOUT



KEY PLAN



FLOOR PLAN 1. All dimensions are in imperial and metric, and measured from finish to finish excluding construction tolerances. 2. All materials, dimensions, and drawings are approximate only. 3. Information is subject to change without notice, at developer's absolute discretion. 4. Actual area may vary from the stated area. 5. Drawings not to scale. 6. All images used are for illustrative purposes only and do not represent the actual size, features, specifications, fittings, and furnishings. 7. The developer reserves the right to make revisions / alterations, at its absolute discretion, without any liability whatsoever.

EMAAR

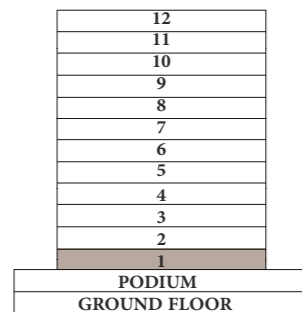
MARINA PLACE 2

RASHID YACHTS & MARINA

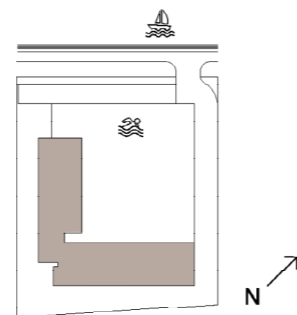
1 BEDROOM - 1C

UNITS	114	
SUITE AREA	66.47 SQ.M.	715.48 SQ.FT.
TERRACE AREA	18.16 SQ.M.	195.47 SQ.FT.
TOTAL AREA	84.63 SQ.M.	910.95 SQ.FT.

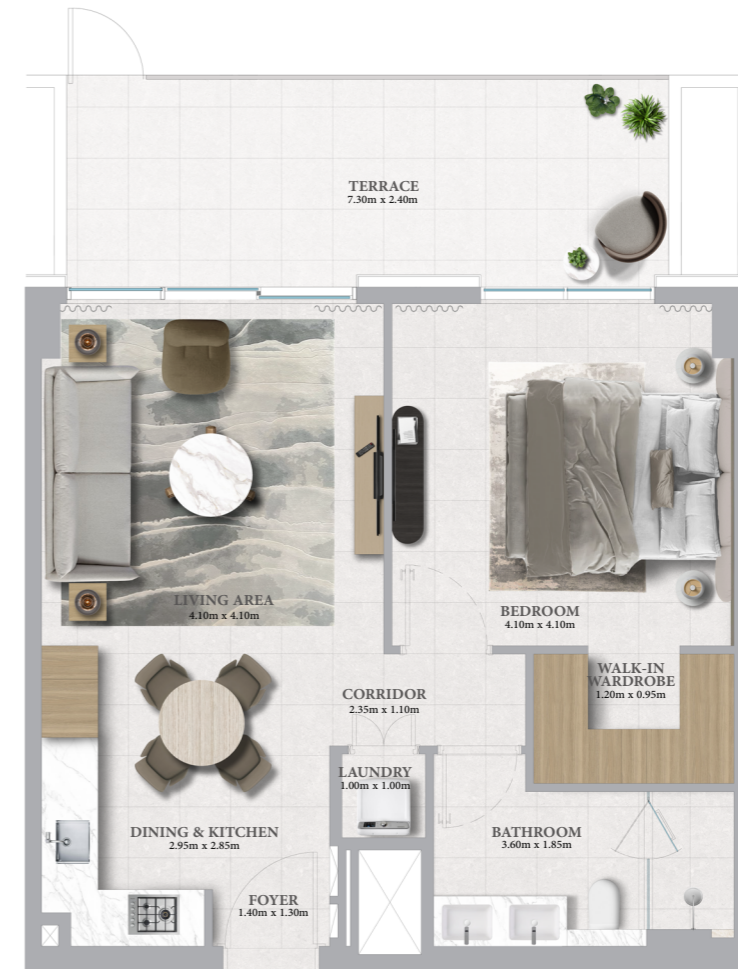
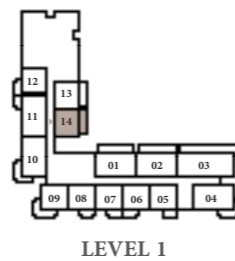
KEY SECTION



KEY LAYOUT



KEY PLAN



FLOOR PLAN 1. All dimensions are in imperial and metric, and measured from finish to finish excluding construction tolerances. 2. All materials, dimensions, and drawings are approximate only. 3. Information is subject to change without notice, at developer's absolute discretion. 4. Actual area may vary from the stated area. 5. Drawings not to scale. 6. All images used are for illustrative purposes only and do not represent the actual size, features, specifications, fittings, and furnishings. 7. The developer reserves the right to make revisions / alterations, at its absolute discretion, without any liability whatsoever.

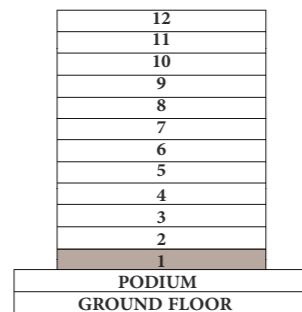
MARINA PLACE 2

RASHID YACHTS & MARINA

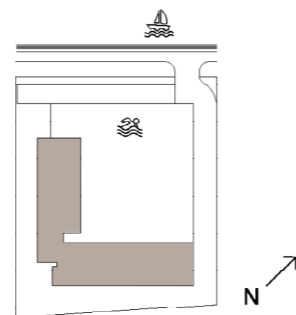
1 BEDROOM - 1D

UNITS	113	
SUITE AREA	66.47 SQ.M.	715.48 SQ.FT.
TERRACE AREA	18.16 SQ.M.	195.47 SQ.FT.
TOTAL AREA	84.63 SQ.M.	910.95 SQ.FT.

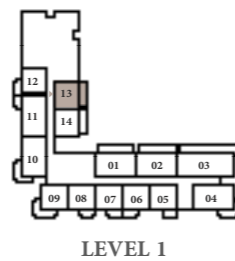
KEY SECTION



KEY LAYOUT



KEY PLAN



FLOOR PLAN 1. All dimensions are in imperial and metric, and measured from finish to finish excluding construction tolerances. 2. All materials, dimensions, and drawings are approximate only. 3. Information is subject to change without notice, at developer's absolute discretion. 4. Actual area may vary from the stated area. 5. Drawings not to scale. 6. All images used are for illustrative purposes only and do not represent the actual size, features, specifications, fittings, and furnishings. 7. The developer reserves the right to make revisions / alterations, at its absolute discretion, without any liability whatsoever.

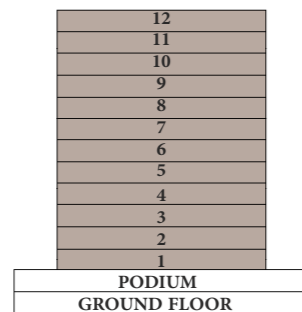
MARINA PLACE 2

RASHID YACHTS & MARINA

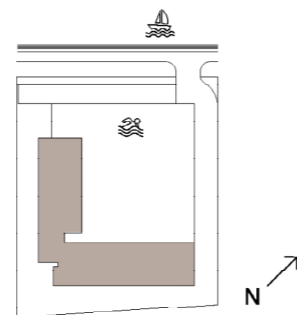
1 BEDROOM - TYPE 2

UNITS	109, 209, 309, 409, 509, 609, 709, 809, 909, 1009, 1109, 1209	
SUITE AREA	66.61 SQ.M.	716.98 SQ.FT.
BALCONY AREA	16.82 SQ.M.	181.05 SQ.FT.
TOTAL AREA	83.43 SQ.M.	898.03 SQ.FT.

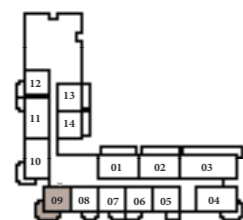
KEY SECTION



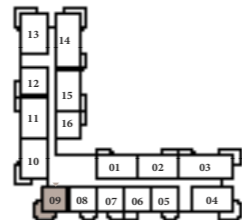
KEY LAYOUT



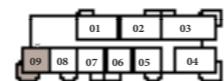
KEY PLAN



LEVEL 1



LEVEL 2-10



LEVEL 11-12



FLOOR PLAN 1. All dimensions are in imperial and metric, and measured from finish to finish excluding construction tolerances. 2. All materials, dimensions, and drawings are approximate only. 3. Information is subject to change without notice, at developer's absolute discretion. 4. Actual area may vary from the stated area. 5. Drawings not to scale. 6. All images used are for illustrative purposes only and do not represent the actual size, features, specifications, fittings, and furnishings. 7. The developer reserves the right to make revisions / alterations, at its absolute discretion, without any liability whatsoever.

EMAAR

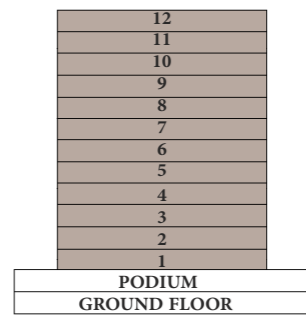
MARINA PLACE 2

RASHID YACHTS & MARINA

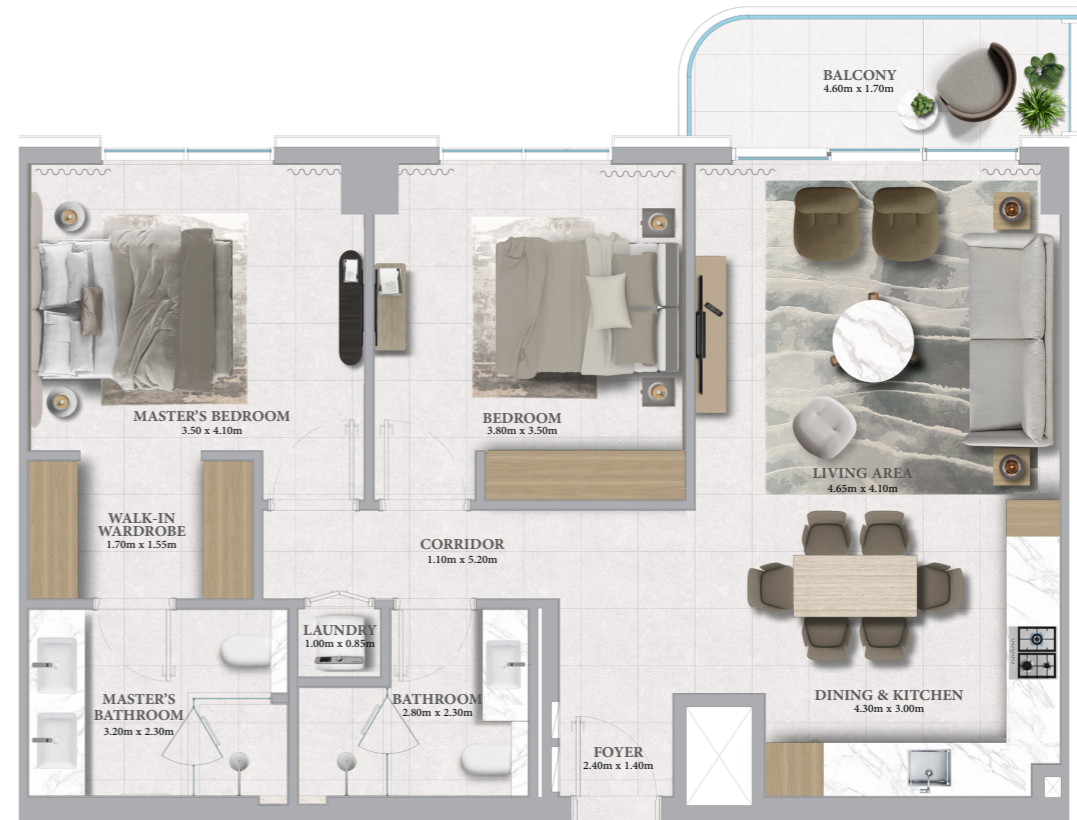
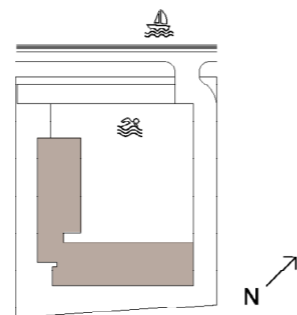
2 BEDROOM - 1A

UNITS	111, 202, 211, 215, 302, 311, 315, 402, 411, 415, 502, 511, 515, 602, 611, 615, 702, 711, 715, 802, 811, 815, 902, 911, 915, 1002, 1011, 1015, 1102, 1202	
SUITE AREA	100.15 SQ.M.	1078.01 SQ.FT.
BALCONY AREA	7.96 SQ.M.	85.68 SQ.FT.
TOTAL AREA	108.11 SQ.M.	1163.69 SQ.FT.

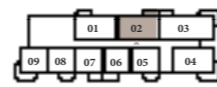
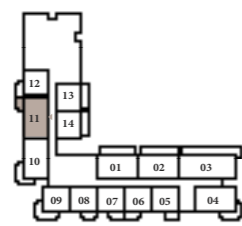
KEY SECTION



KEY LAYOUT



KEY PLAN



FLOOR PLAN 1. All dimensions are in imperial and metric, and measured from finish to finish excluding construction tolerances. 2. All materials, dimensions, and drawings are approximate only. 3. Information is subject to change without notice, at developer's absolute discretion. 4. Actual area may vary from the stated area. 5. Drawings not to scale. 6. All images used are for illustrative purposes only and do not represent the actual size, features, specifications, fittings, and furnishings. 7. The developer reserves the right to make revisions / alterations, at its absolute discretion, without any liability whatsoever.

EMAAR

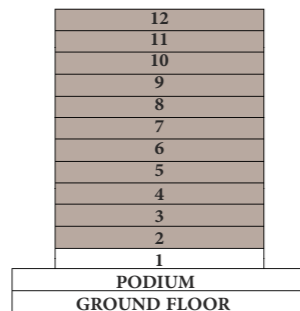
MARINA PLACE 2

RASHID YACHTS & MARINA

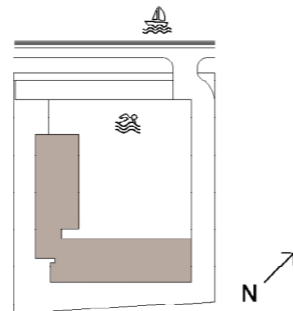
2 BEDROOM - 1B

UNITS	201, 301, 401, 501, 601, 701, 801, 901, 1001, 1101, 1201	
SUITE AREA	101.64 SQ.M.	1094.04 SQ.FT.
BALCONY AREA	7.80 SQ.M.	83.96 SQ.FT.
TOTAL AREA	109.44 SQ.M.	1178.00 SQ.FT.

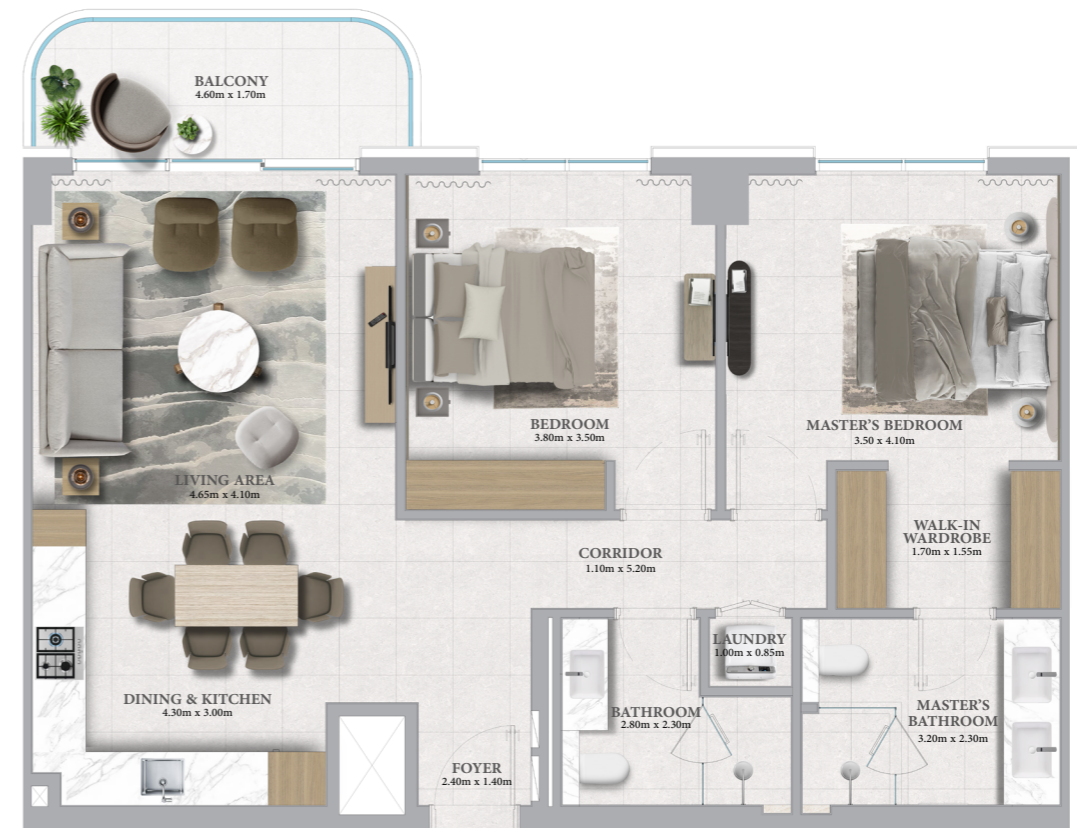
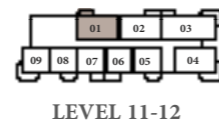
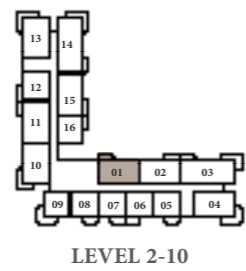
KEY SECTION



KEY LAYOUT



KEY PLAN



FLOOR PLAN 1. All dimensions are in imperial and metric, and measured from finish to finish excluding construction tolerances. 2. All materials, dimensions, and drawings are approximate only. 3. Information is subject to change without notice, at developer's absolute discretion. 4. Actual area may vary from the stated area. 5. Drawings not to scale. 6. All images used are for illustrative purposes only and do not represent the actual size, features, specifications, fittings, and furnishings. 7. The developer reserves the right to make revisions / alterations, at its absolute discretion, without any liability whatsoever.

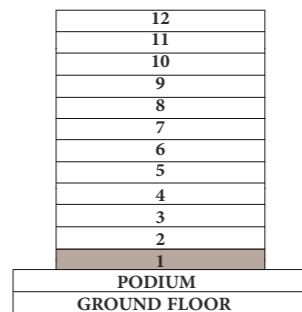
MARINA PLACE 2

RASHID YACHTS & MARINA

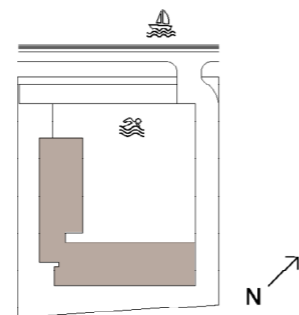
2 BEDROOM - 1C

UNITS	102	
SUITE AREA	100.15 SQ.M.	1078.01 SQ.FT.
TERRACE AREA	28.67 SQ.M.	308.60 SQ.FT.
TOTAL AREA	128.82 SQ.M.	1386.61 SQ.FT.

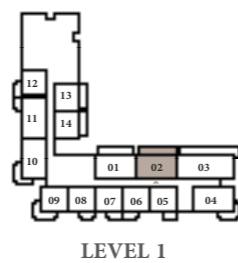
KEY SECTION



KEY LAYOUT



KEY PLAN



FLOOR PLAN 1. All dimensions are in imperial and metric, and measured from finish to finish excluding construction tolerances. 2. All materials, dimensions, and drawings are approximate only. 3. Information is subject to change without notice, at developer's absolute discretion. 4. Actual area may vary from the stated area. 5. Drawings not to scale. 6. All images used are for illustrative purposes only and do not represent the actual size, features, specifications, fittings, and furnishings. 7. The developer reserves the right to make revisions / alterations, at its absolute discretion, without any liability whatsoever.

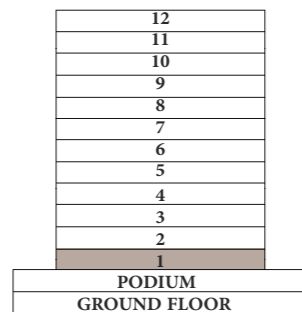
MARINA PLACE 2

RASHID YACHTS & MARINA

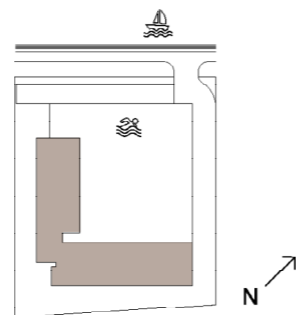
2 BEDROOM - 1D

UNITS		101
SUITE AREA	101.64 SQ.M.	1094.04 SQ.FT.
TERRACE AREA	28.67 SQ.M.	308.60 SQ.FT.
TOTAL AREA	130.31 SQ.M.	1402.64 SQ.FT.

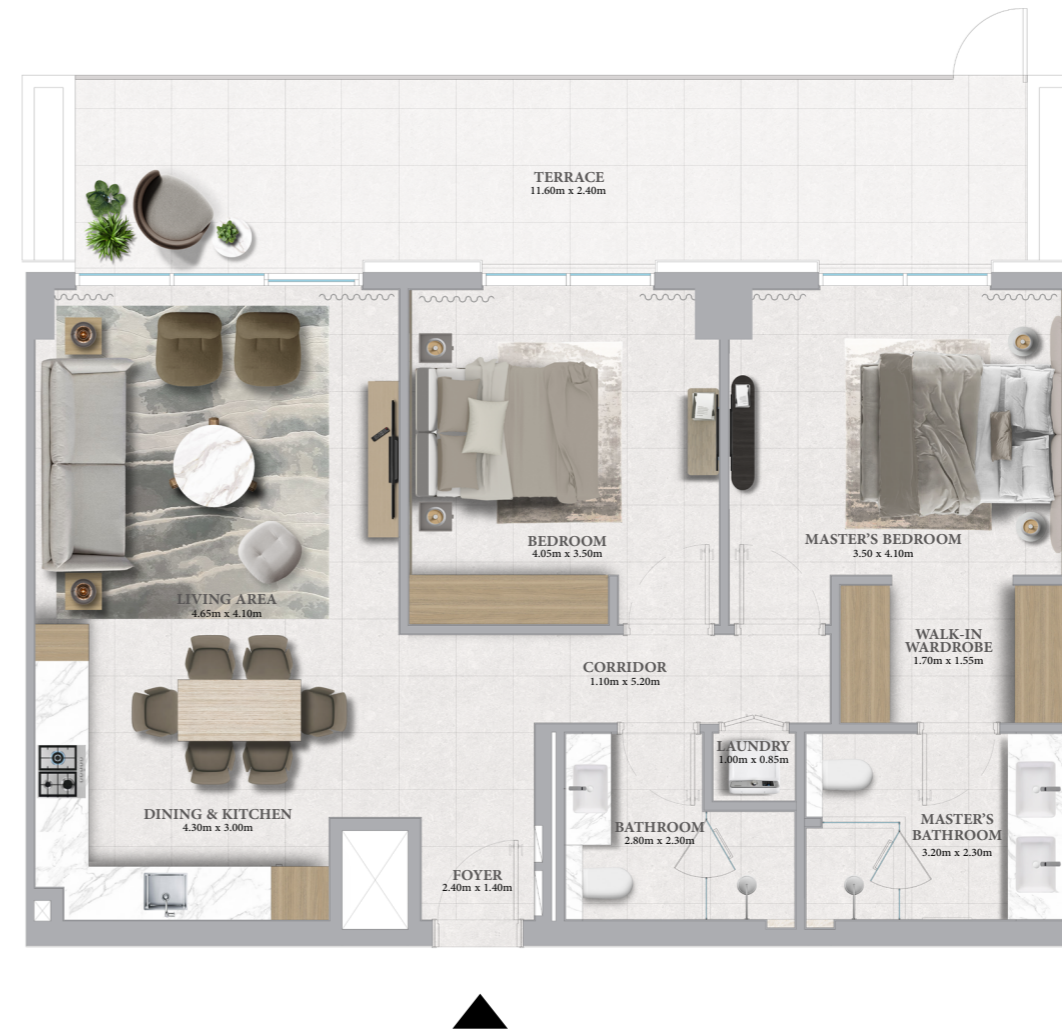
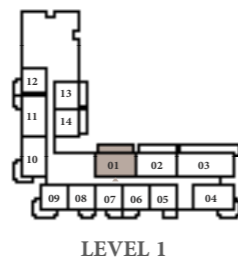
KEY SECTION



KEY LAYOUT



KEY PLAN



FLOOR PLAN 1. All dimensions are in imperial and metric, and measured from finish to finish excluding construction tolerances. 2. All materials, dimensions, and drawings are approximate only. 3. Information is subject to change without notice, at developer's absolute discretion. 4. Actual area may vary from the stated area. 5. Drawings not to scale. 6. All images used are for illustrative purposes only and do not represent the actual size, features, specifications, fittings, and furnishings. 7. The developer reserves the right to make revisions / alterations, at its absolute discretion, without any liability whatsoever.

MARINA PLACE 2

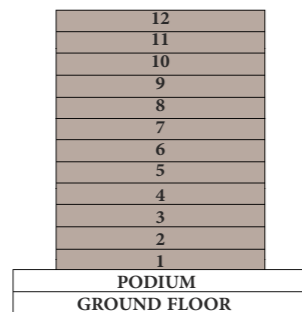
RASHID YACHTS & MARINA

2 BEDROOM - TYPE 2

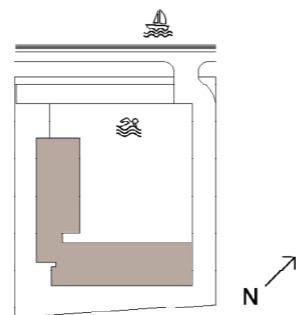
UNITS	110, 210, 310, 410, 510, 610, 710, 810, 910, 1010	
SUITE AREA	101.88 SQ.M.	1096.63 SQ.FT.
BALCONY AREA	16.82 SQ.M.	181.05 SQ.FT.
TOTAL AREA	118.70 SQ.M.	1277.68 SQ.FT.

UNITS	104, 204, 304, 404, 504, 604, 704, 804, 904, 1004, 1104, 1204	
SUITE AREA	103.47 SQ.M.	1113.74 SQ.FT.
BALCONY AREA	16.82 SQ.M.	181.05 SQ.FT.
TOTAL AREA	120.29 SQ.M.	1294.79 SQ.FT.

KEY SECTION



KEY LAYOUT



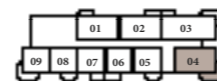
KEY PLAN



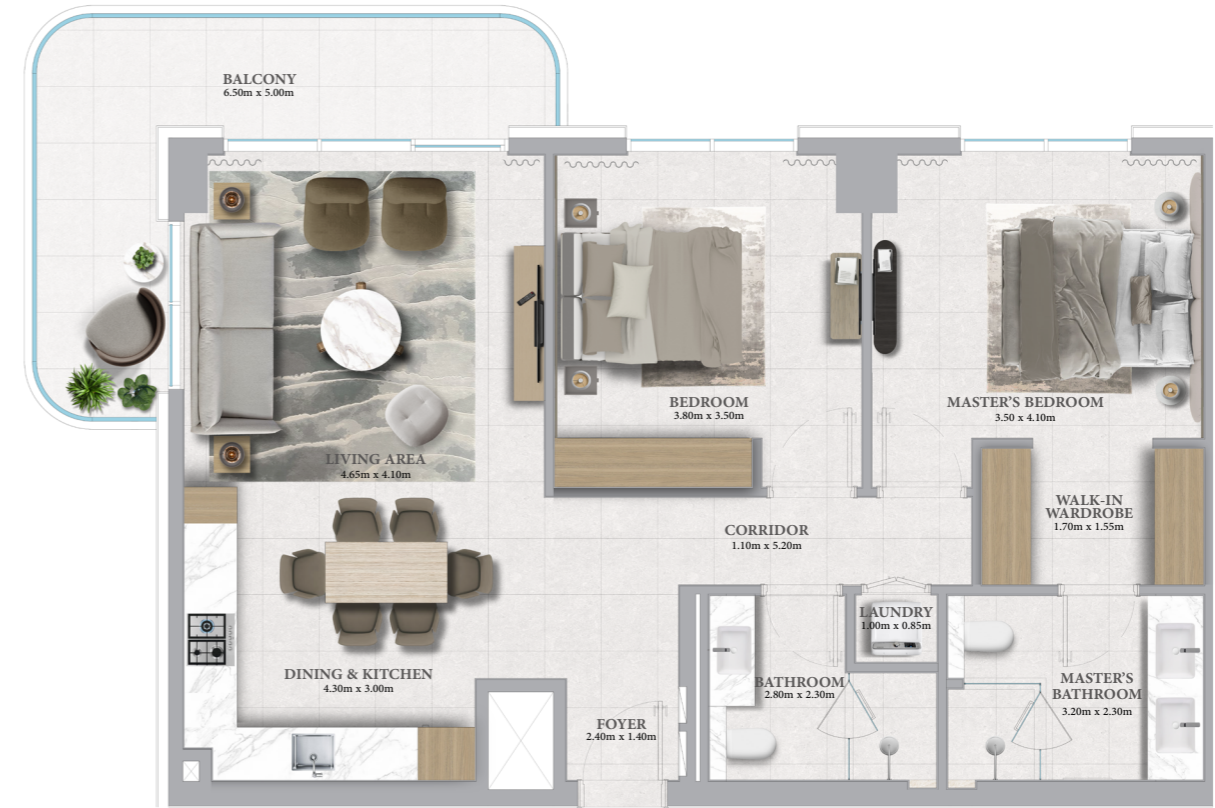
LEVEL 1



LEVEL 2-10



LEVEL 11-12



FLOOR PLAN 1. All dimensions are in imperial and metric, and measured from finish to finish excluding construction tolerances. 2. All materials, dimensions, and drawings are approximate only. 3. Information is subject to change without notice, at developer's absolute discretion. 4. Actual area may vary from the stated area. 5. Drawings not to scale. 6. All images used are for illustrative purposes only and do not represent the actual size, features, specifications, fittings, and furnishings. 7. The developer reserves the right to make revisions / alterations, at its absolute discretion, without any liability whatsoever.

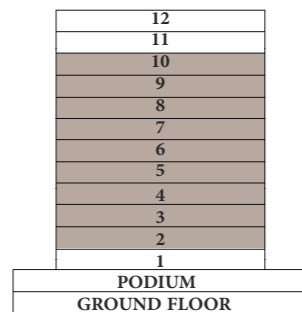
MARINA PLACE 2

RASHID YACHTS & MARINA

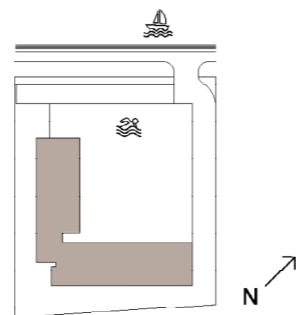
2 BEDROOM - TYPE 3

UNITS	213, 313, 413, 513, 613, 713, 813, 913, 1013	
SUITE AREA	103.54 SQ.M.	1114.50 SQ.FT.
BALCONY AREA	19.41 SQ.M.	208.93 SQ.FT.
TOTAL AREA	122.95 SQ.M.	1323.43 SQ.FT.

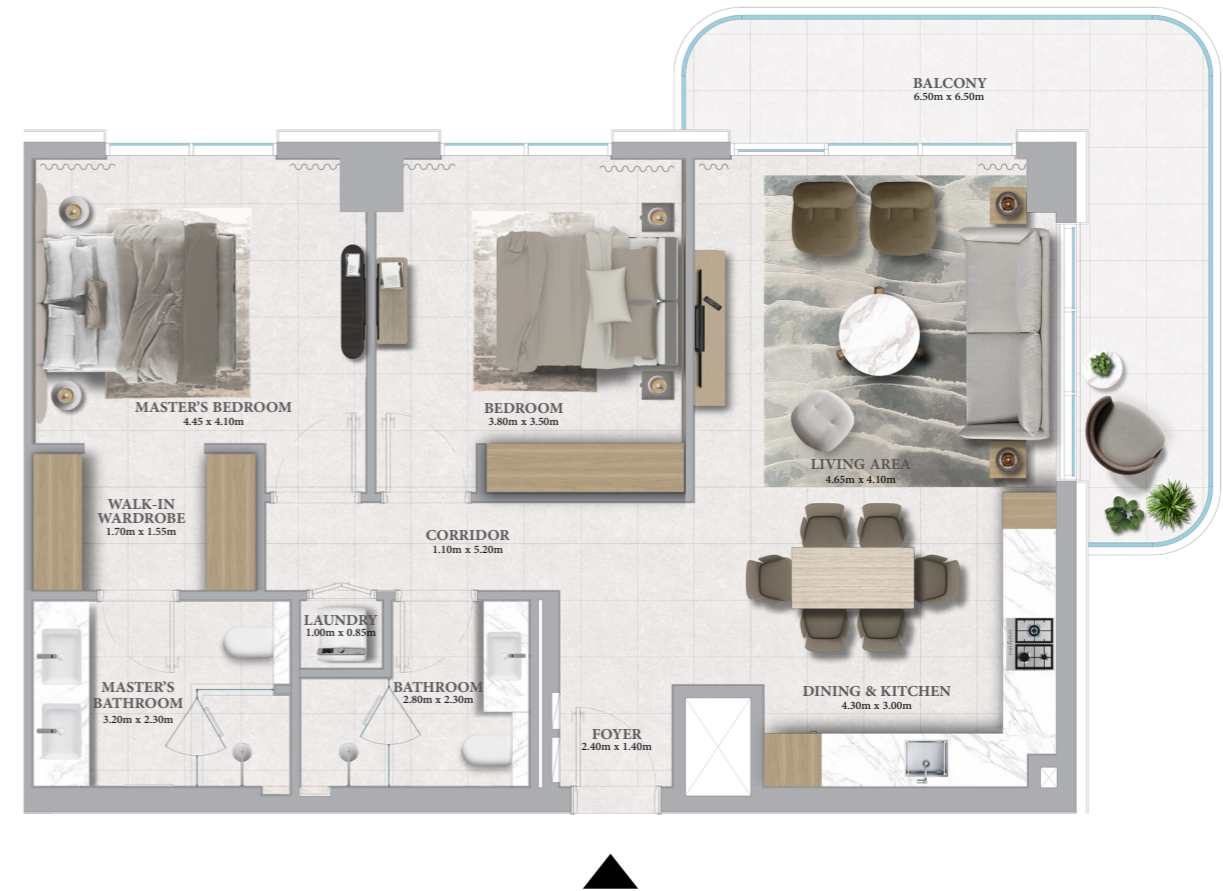
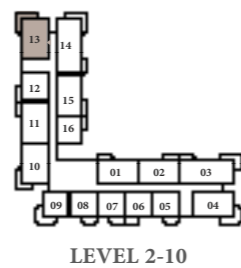
KEY SECTION



KEY LAYOUT



KEY PLAN



FLOOR PLAN 1. All dimensions are in imperial and metric, and measured from finish to finish excluding construction tolerances. 2. All materials, dimensions, and drawings are approximate only. 3. Information is subject to change without notice, at developer's absolute discretion. 4. Actual area may vary from the stated area. 5. Drawings not to scale. 6. All images used are for illustrative purposes only and do not represent the actual size, features, specifications, fittings, and furnishings. 7. The developer reserves the right to make revisions / alterations, at its absolute discretion, without any liability whatsoever.

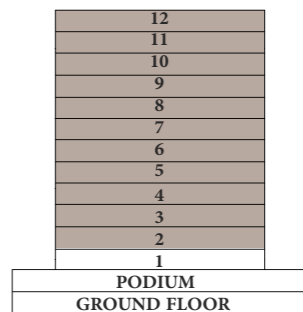
MARINA PLACE 2

RASHID YACHTS & MARINA

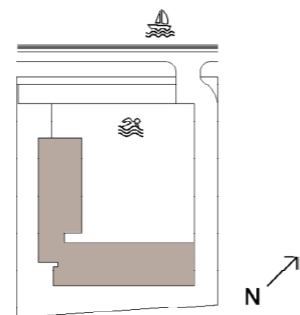
3 BEDROOM - 1A

UNITS	203, 303, 403, 503, 603, 703, 803, 903, 1003, 1103, 1203	
SUITE AREA	134.76 SQ.M.	1450.54 SQ.FT.
BALCONY AREA	24.87 SQ.M.	267.70 SQ.FT.
TOTAL AREA	159.63 SQ.M.	1718.24 SQ.FT.

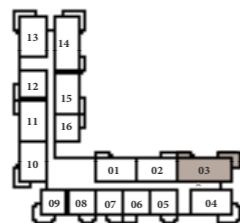
KEY SECTION



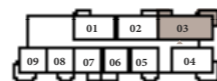
KEY LAYOUT



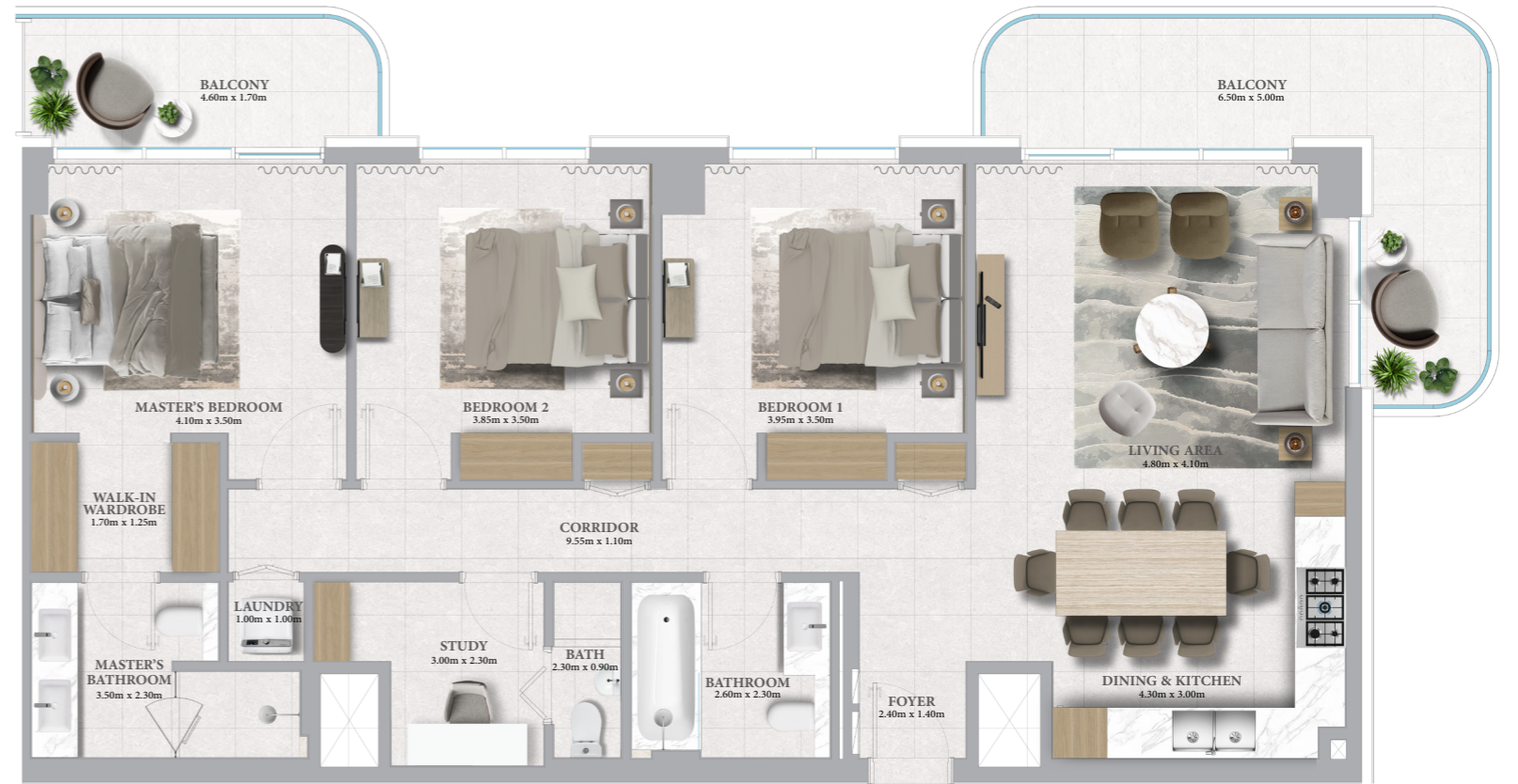
KEY PLAN



LEVEL 2-10



LEVEL 11-12



FLOOR PLAN 1. All dimensions are in imperial and metric, and measured from finish to finish excluding construction tolerances. 2. All materials, dimensions, and drawings are approximate only. 3. Information is subject to change without notice, at developer's absolute discretion. 4. Actual area may vary from the stated area. 5. Drawings not to scale. 6. All images used are for illustrative purposes only and do not represent the actual size, features, specifications, fittings, and furnishings. 7. The developer reserves the right to make revisions / alterations, at its absolute discretion, without any liability whatsoever.

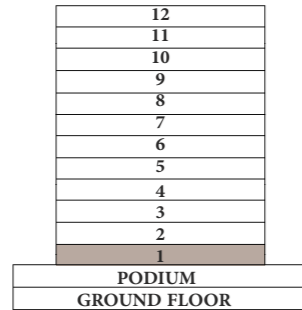
MARINA PLACE 2

RASHID YACHTS & MARINA

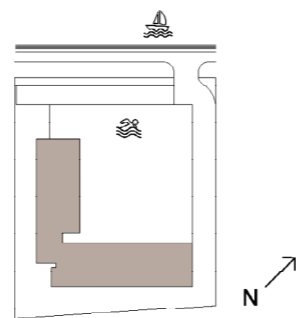
3 BEDROOM - 1B

UNITS	103	
SUITE AREA	134.76 SQ.M.	1450.54 SQ.FT.
TERRACE AREA	46.85 SQ.M.	504.29 SQ.FT.
TOTAL AREA	181.61 SQ.M.	1954.83 SQ.FT.

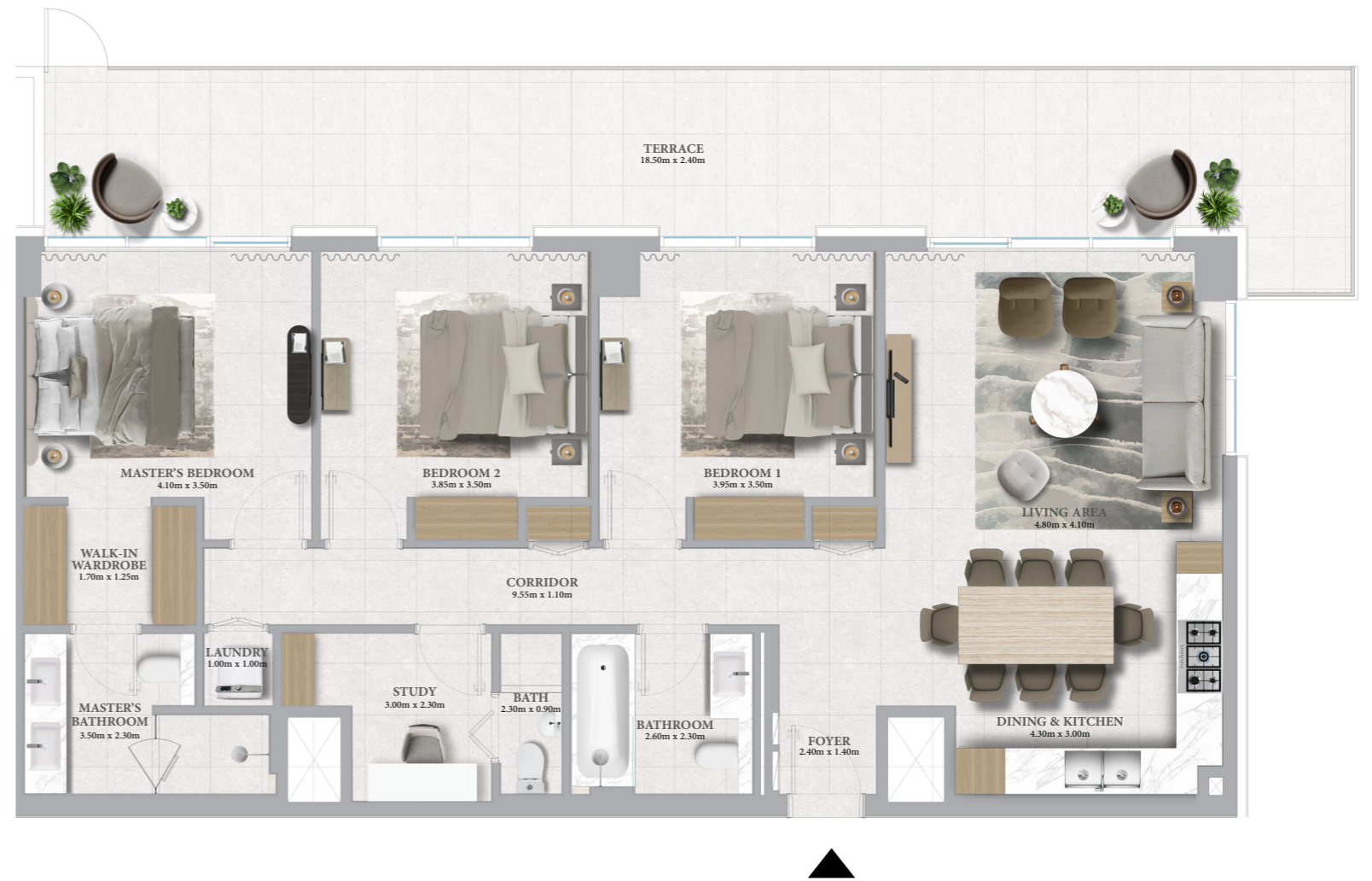
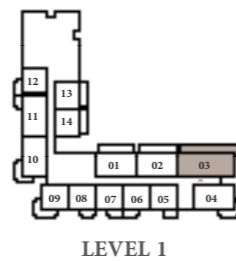
KEY SECTION



KEY LAYOUT



KEY PLAN



FLOOR PLAN 1. All dimensions are in imperial and metric, and measured from finish to finish excluding construction tolerances. 2. All materials, dimensions, and drawings are approximate only. 3. Information is subject to change without notice, at developer's absolute discretion. 4. Actual area may vary from the stated area. 5. Drawings not to scale. 6. All images used are for illustrative purposes only and do not represent the actual size, features, specifications, fittings, and furnishings. 7. The developer reserves the right to make revisions / alterations, at its absolute discretion, without any liability whatsoever.

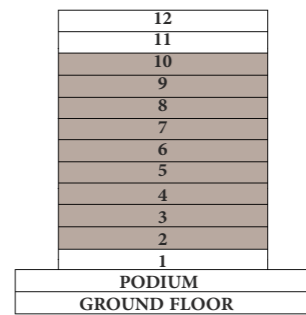
MARINA PLACE 2

RASHID YACHTS & MARINA

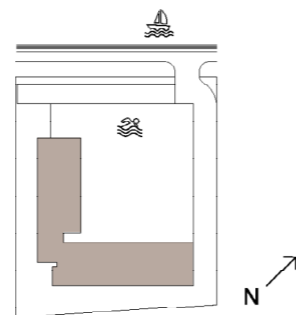
3 BEDROOM - TYPE 2

UNITS	214, 314, 414, 514, 614, 714, 814, 914, 1014	
SUITE AREA	134.83 SQ.M.	1451.30 SQ.FT.
BALCONY AREA	27.21 SQ.M.	292.89 SQ.FT.
TOTAL AREA	162.04 SQ.M.	1744.19 SQ.FT.

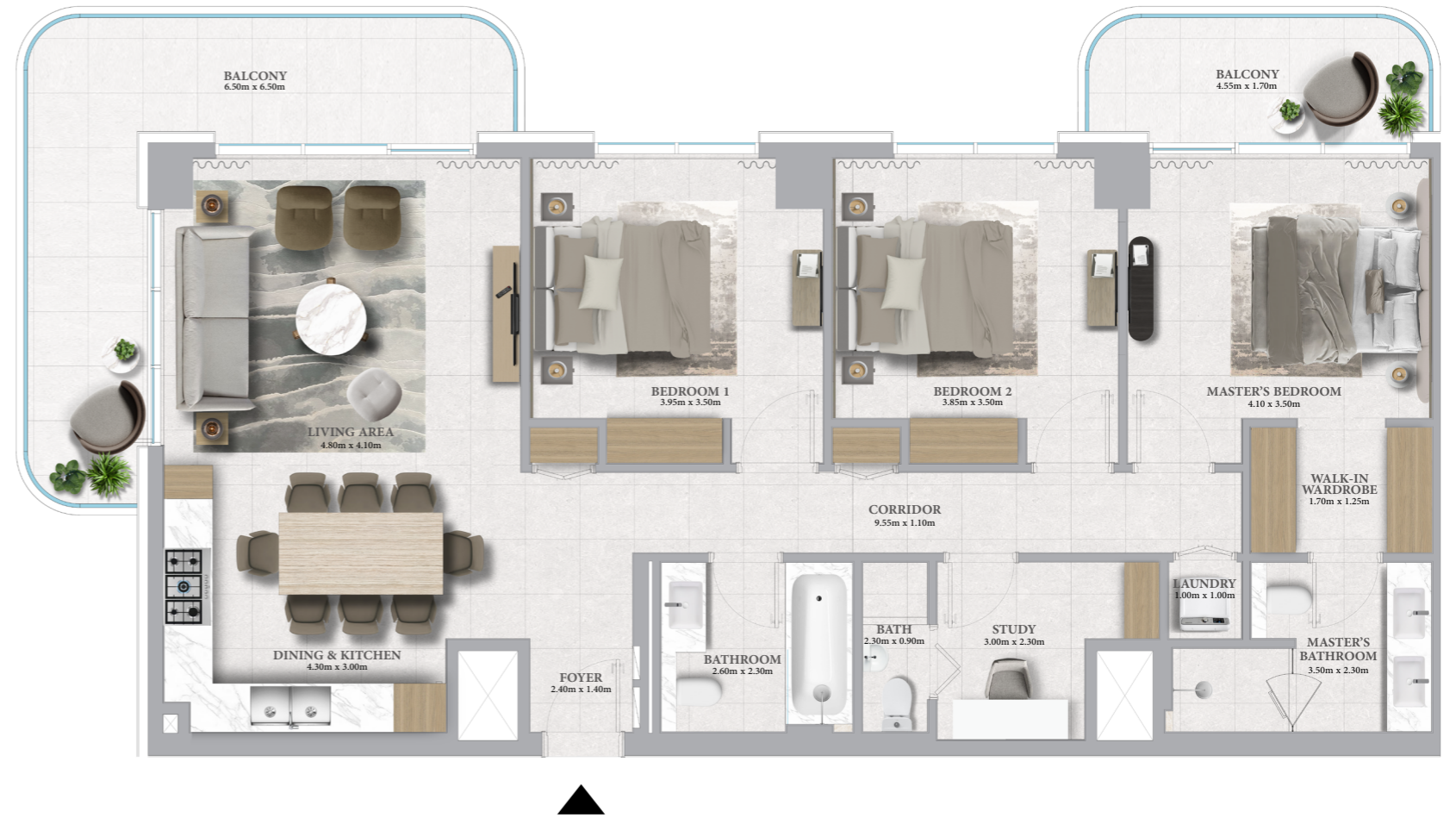
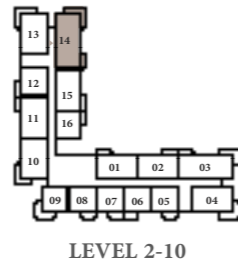
KEY SECTION



KEY LAYOUT



KEY PLAN



FLOOR PLAN 1. All dimensions are in imperial and metric, and measured from finish to finish excluding construction tolerances. 2. All materials, dimensions, and drawings are approximate only. 3. Information is subject to change without notice, at developer's absolute discretion. 4. Actual area may vary from the stated area. 5. Drawings not to scale. 6. All images used are for illustrative purposes only and do not represent the actual size, features, specifications, fittings, and furnishings. 7. The developer reserves the right to make revisions / alterations, at its absolute discretion, without any liability whatsoever.

MARINA PLACE 2

RASHID YACHTS & MARINA

For more information please call 800 36227 (UAE) / +971 4 366 1688 (International) or talk to our Property Advisor directly at +971 4888 8844 from 9 AM to 7 PM (GST), Monday to Friday. Visit our online sales centre at emaar.com or any of our Sales Centres across the UAE.

Dubai

Emaar Sales Centre | Next to Souq Al Bahar, Downtown Dubai

9:30 AM to 10 PM, Sunday - Friday

9:30 AM to 7 PM, Saturday

Dubai Hills Estate Sales Pavilion | Umm Suqeim Road

Dubai Creek Harbour Sales Pavilion | Ras Al Khor

From 9:30 AM to 7 PM, Sunday - Saturday

ABU DHABI

Emaar Sales Centre | Al Nahda Tower, Ground Floor,

4th Street, Corniche, Al Muroor Road

From 9:30 AM to 7 PM, Sunday - Friday

EMAAR